

General Pressure Gauge

Model No. **SS-3010 Series**

KINS

Ordering Information

SS-3011 × 100mm × 0~1MPa × PF3/8

Connection :

- PT1/8 (40mm SS-3011, SS-3013)
- PF1/4 (50mm SS-3011)
(60mm SS-3011, SS-3012)
(60mm SS-3013, SS-3014)
- PT1/4 (50mm SS-3013)
- PF&PT 3/8 (75mm Series, 100mm Series)
(150mm Series, 200mm Series)
- PF&PT 1/2 (100mm)

Range :

- 40mm : 0.2 ~ 5 MPa
- 50mm : 0.2 ~ 5 MPa
- 60mm : -0.1 ~ 2 MPa, -0.1~0MPa, 0 ~ 35MPa
- 75mm : -0.1 ~ 2 MPa, -0.1~0MPa, 0 ~ 35MPa
- 100mm : -0.1 ~ 2 MPa, -0.1~0MPa, 0 ~ 100MPa
- 150mm : -0.1 ~ 2 MPa, -0.1~0MPa, 0 ~ 100MPa
- 200mm : -0.1 ~ 2 MPa, -0.1~0MPa, 0 ~ 100MPa

Nominal Diameter & Accuracy :

- 40mm (Accuracy : ±3.0% of Full Scale)
- 50mm (Accuracy : ±1.5% of Full Scale)
- 60mm (Accuracy : ±1.5% of Full Scale)
- 75mm (Accuracy : ±1.5% of Full Scale)
- 100mm (Accuracy : ±1.5% of Full Scale)
- 150mm (Accuracy : ±1.5% of Full Scale)
- 200mm (Accuracy : ±1.5% of Full Scale)

Base Model & Mounting Type :

- SS-3011(A:Rimless type) : Bottom Connection, Direct
- SS-3012(B:Surface type) : Bottom Connection, Surface
- SS-3013(D:Flush mounting type) : Lower Back Connection, Direct
- SS-3014(BD:Panel attachment type) : Lower Back Connection, Flush
 - ▶ 40mm, 50mm : Only available with SS-3011, SS-3013
 - ▶ 200mm : Only available with SS-3012

Pressure Gauge

Differential Pressure Gauge & Switch

Accessories of Pressure Gauge

Thermometer & Thermometer Switch

Thermocouple & R.T.D

Thermowell

Transmitter

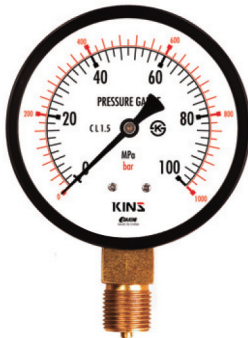
Indicator etc.

Technical data

General Pressure Gauge

Model No. **SS-3010 Series**

KINS



SS-3011



SS-3014

Summary

This gauge is the most widely used pressure gauge. It has high durability by doing special process in bourdon tube. It also has high elasticity because it uses copper alloy in the part of connection and it is very useful in measuring general pressure.

Safety Management

- Be sure to install a protecting device where exist abrupt change of pressure, vibration and pulsation.
- Do not give impact during the transportation, installation and usage.
- Be sure to install pressure gauge to be horizontal and vertical.
- Do not use fluid for measuring which has high viscosity, temperature lower than 40°C and coagulability.

Purpose of Use

- For pipe where static pressure is put or gas & steam line which does not have corrosiveness.
- Pressure measurement and monitoring of small instrument in various sites such as supply air, instrument air.

Production Specification

- ▶ **Diameter**
 - 40, 50, 60, 75, 100, 150mm
- ▶ **Accuracy**
 - 40mm : $\pm 3.0\%$ of Full Scale
 - 50mm : $\pm 3.0\%$ or $\pm 1.5\%$ of Full Scale
 - 60, 75, 100, 150mm : $\pm 1.5\%$ of Full Scale
- ▶ **Working Pressure**
 - Static pressure : 75% of Full Scale
 - Fluctuating pressure : 60% of Full Scale
- ▶ **Working Temperature**
 - Ambient : $-20 \sim 65^{\circ}\text{C}$
 - Fluid : $-20 \sim 40^{\circ}\text{C}$

▶ Range

40mm	0.2 ~ 5 MPa
50mm	
60mm	– 0.1 ~ 2 MPa – 0.1 ~ 0 MPa 0 ~ 35 MPa
75mm	
100mm	– 0.1 ~ 2 MPa – 0.1 ~ 0 MPa 0 ~ 100 MPa
150mm	

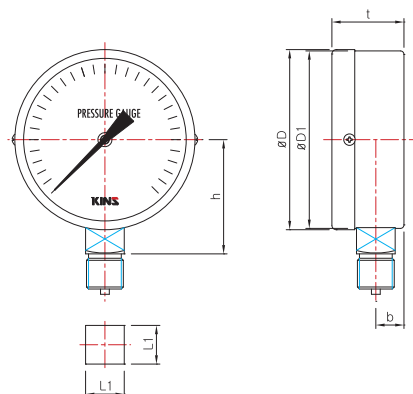
Product Specification

- + **Case**
 - Steel(SPCD)
 - Black coating
- + **Cover**
 - Steel(SPCD)
 - Black coating
- + **Connection**
 - Brass(C3604BE)
 - PF \leftrightarrow 3/8
- + **Window**
 - General glass
- + **Type**
 - A-Type (Rimless type)
 - B-Type (Surface type)
 - D-Type (Flush mounting type)
 - BD-Type (Panel attachment type)
- + **Pointer**
 - Aluminum
 - Black coating
- + **Dial**
 - Aluminum
 - White color coating
 - Black (MPa), red (bar) gradations and characters
- + **Element**
 - Brass(C2700T)
 - C type bourdon tube, helical type bourdon tube
- + **Movement**
 - Brass
- + **Option**
 - Bracket
 - Throttles
 - Accessories

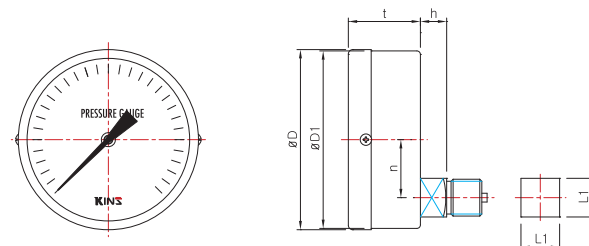
General Pressure Gauge

Model No. SS-3010 Series

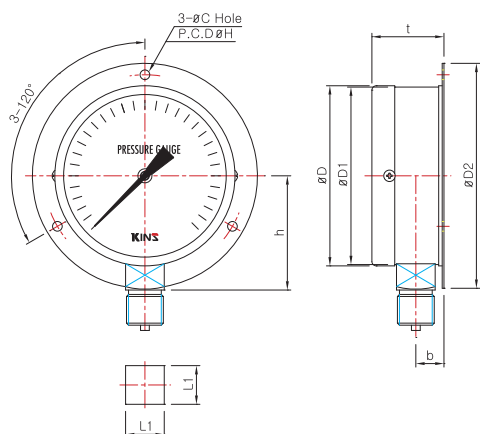
Model No. | SS-3011
A Type (40, 50, 60, 75, 100, 150mm)



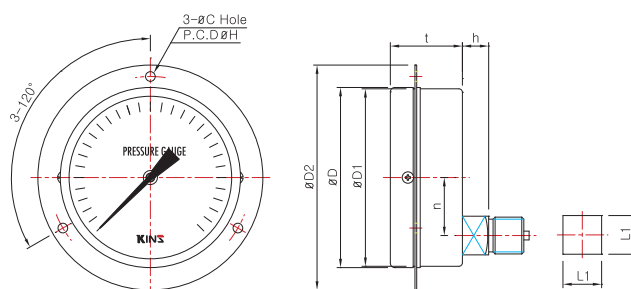
Model No. | SS-3013
D Type (60, 75, 100, 150mm)



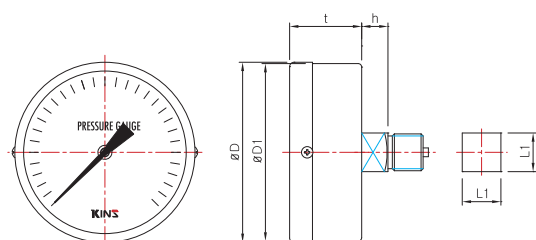
Model No. | SS-3012
B Type (60, 75, 100, 150mm)



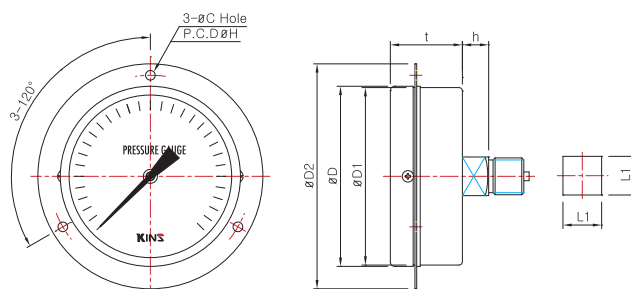
Model No. | SS-3014
BD Type (100, 150mm)



Model No. | SS-3013
D Type (40, 50, 60, 75mm)



Model No. | SS-3014
BD Type (60, 75mm)



Dimensions (mm)

	Model No.	Conn'n (d)	ØD	ØD1	ØD2	b	n	t	L1	h	ØC	ØH
40mm	SS-3011	NPT & PT 1/8	42	41	—	8	—	(24)	12	(30)	—	—
	SS-3013	NPT & PT 1/8			—	—	—	(26)		(9)	—	—
50mm	SS-3011	PF 1/4	53	51.5	—	9.5	—	(30)	14	(36)	—	—
		NPT & PT 1/4			—	—	—	(30)		(36)	—	—
	SS-3013	PF 1/4			—	9.5	—	(30)	14	(10)	—	—
		NPT & PT 1/4			—	—	—	(30)		(10)	—	—
60mm	SS-3011 & SS-3012	PF & PT 1/4	63	62	80	10.5	—	(33)	14	(40)	4.5	72
	SS-3013 & SS-3014	PF & PT 1/4			80	—	—	(33)		(10)		
75mm	SS-3011 & SS-3012	PF & PT 3/8	78	76	100	12	—	(35)	17	(52)	4.5	88
	SS-3013 & SS-3014	PF & PT 3/8			100	—	—	(35)		(14)		
100mm	SS-3011 & SS-3012	PF & PT 3/8	102	100	128	13.5	—	(36)	22	(63)	5.5	115
	SS-3013 & SS-3014	PF & PT 3/8			128	—	21.5	(36)		(15)		
150mm	SS-3011 & SS-3012	PF & PT 1/2	154	152	188	17	—	(41)	17	(94)	5.5	115
	SS-3013 & SS-3014	PF & PT 1/2			188	—	33	(41)		(24)		

*()The measurement in the blanket is approximate.

Pressure Gauge

Differential Pressure Gauge & Switch

Accessories of Pressure Gauge

Thermometer & Thermometer Switch

Thermocouple & R.T.D

Thermowell

Transmitter

Indicator etc.

Technical data

General Pressure Gauge

Model No. **SS-3010 Series**

KINS



SS-3012 200mm

Summary

This gauge is the most widely used pressure gauge. It has high durability by doing special process in bourdon tube. It also has high elasticity because it uses copper alloy in the part of connection and it is very useful in measuring general pressure.

Safety Management

- Be sure to install a protecting device where exist abrupt change of pressure, vibration and pulsation.
- Do not give impact during the transportation, installation and usage.
- Be sure to install pressure gauge to be horizontal and vertical.
- Do not use fluid for measuring which has high viscosity, temperature lower than 40°C and coagulability.

Purpose of Use

- For pipe where static pressure is put or gas & steam line which does not have corrosiveness.
- Pressure measurement and monitoring of small instrument in various sites such as supply air, instrument air.

Production Specification

- ▶ Diameter
 - 200 mm
- ▶ Accuracy
 - $\pm 1.5\%$ of Full Scale
- ▶ Working Pressure
 - Static pressure : 75% of Full Scale
 - Fluctuating pressure : 60% of Full Scale
- ▶ Working Temperature
 - Ambient : $-20 \sim 65^{\circ}\text{C}$
 - Fluid : $-20 \sim 80^{\circ}\text{C}$

▶ Range

200mm	- 0.1 ~ 2 MPa
	- 0.1 ~ 0 MPa
	0 ~ 5 MPa

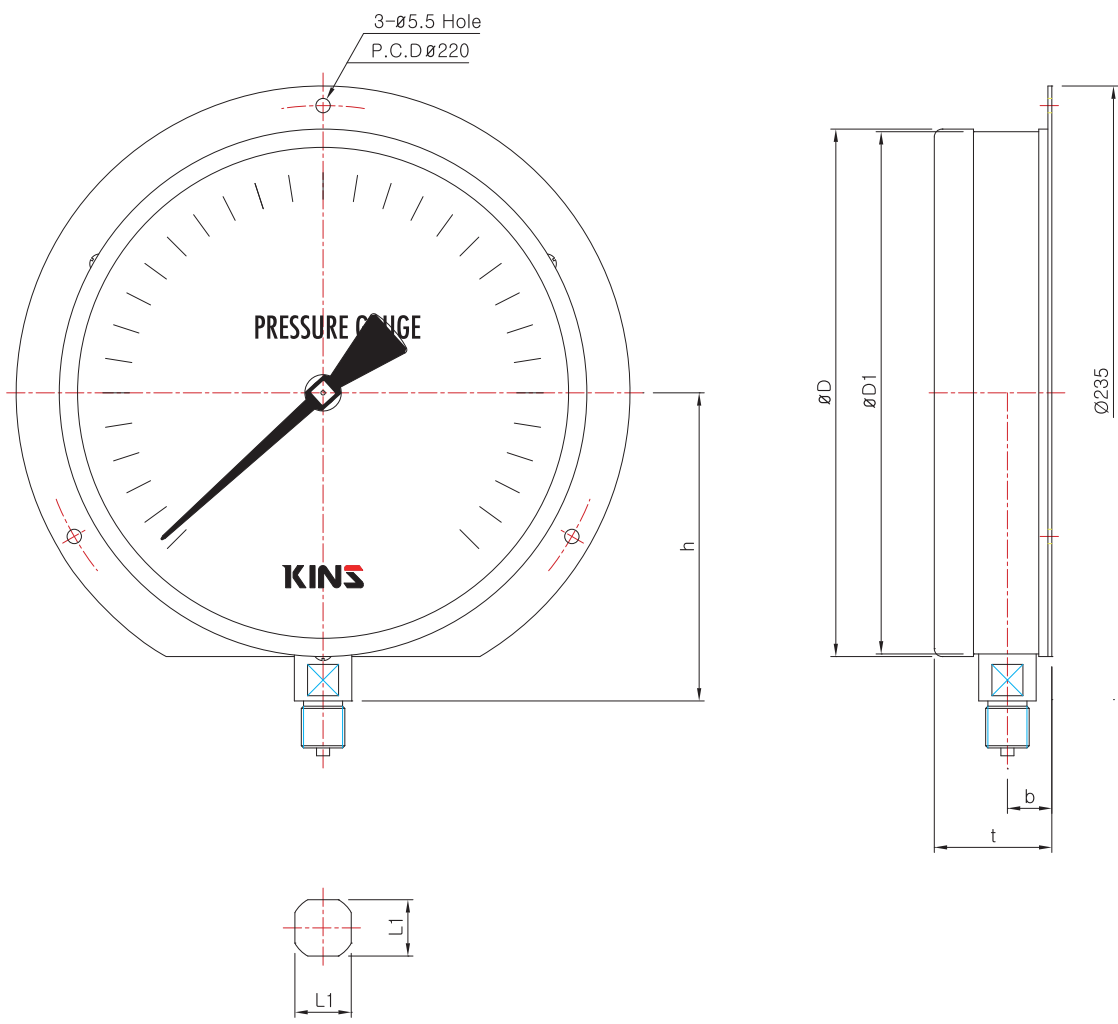
Product Specification

- | | | |
|---|---|--|
| <ul style="list-style-type: none">+ Case<ul style="list-style-type: none">· Steel(SPCD)· Black coating+ Cover<ul style="list-style-type: none">· Steel(SPCD)· Black coating+ Connection<ul style="list-style-type: none">· Brass(C3604BE)· PF \leftrightarrow 3/8 | <ul style="list-style-type: none">+ Window<ul style="list-style-type: none">· General glass+ Type<ul style="list-style-type: none">· B-Type (Surface type)+ Pointer<ul style="list-style-type: none">· Aluminum· Black coating+ Dial<ul style="list-style-type: none">· Aluminum· White color coating· Black (MPa), red (bar) gradations and characters | <ul style="list-style-type: none">+ Element<ul style="list-style-type: none">· Brass(C2700T)· C type bourdon tube+ Movement<ul style="list-style-type: none">· Brass+ Option<ul style="list-style-type: none">· Throttles· Accessories |
|---|---|--|

General Pressure Gauge

Model No. **SS-3010 Series**

Model No. | **SS-3012 (200mm)**
B Type (Surface type)



Dimensions (mm)

Model No.	Conn'n (d)	ØD	ØD1	b	n	t	L1	h
SS-3012	PF 3/8	200	198	17,5	—	(50)	19	(117)

*()The measurement in the blanket is approximate.